



Magnetel® Rough Rider® Liquid-Level Gauges for Industrial

Application

The M6300 series Magnetel® Rough Rider® gauges were designed to withstand the vibration and shock inherent in mobile service. Their service life in both on-highway and off-road transports, carrying liquids like crude oil, is unsurpassed. Models M6339-00011 and M6342-00011 are intended for on-highway service applications. Models M6339-00012 and M6342-00012 are intended for both on-highway and off-road, including crude oil and/or water service applications. These gauges allow a continuous reading between 5% and 95% of tank contents.

General Information & Features*

The Magnetel® Rough Rider® gauges are to be installed in the side or end of mobile tanks at the centerline. They are equipped with an exclusive spring controlled shock absorber on the float arm which substantially reduces the stress that quickly destroys conventional gauges. Angle mounting gauges are also available.

The M6339 incorporates a 4" [100 mm] dial and the M6342 incorporates an 8" [200 mm] dial. When necessary, the dials are easily replaceable. Refer to price list P6300 for available types, part numbers, etc., as well as other replacement parts and accessories.

Price list M6300 includes information on materials of construction, available options, and sales and pricing policy.

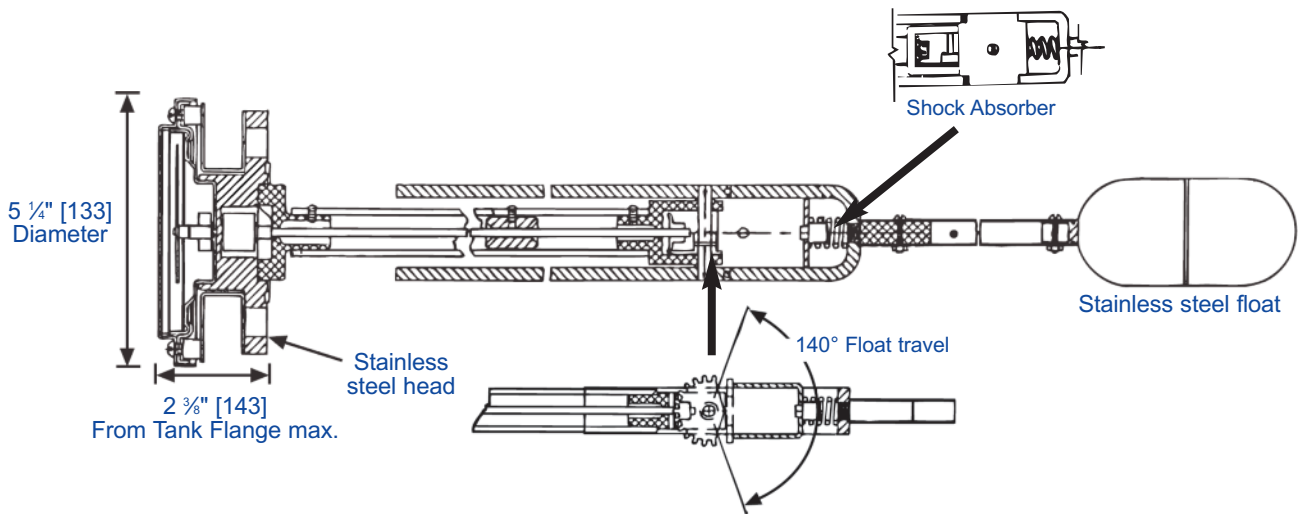
The Magnetel® Rough Rider® gauges are designed for working pressures ranging from atmospheric to 450 [31 Bar] psig.



* Materials and specifications are subject to change without notice.
Pressure ratings subject to change due to temperature and other environmental considerations.

See reverse side for dimensional data, materials of construction, performance, and advice on how to order.

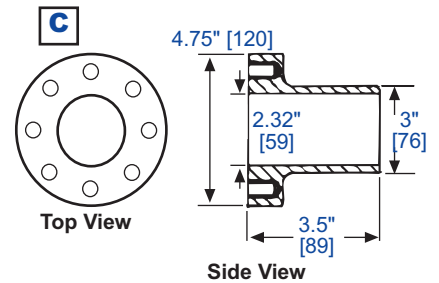
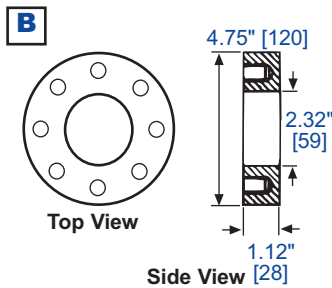
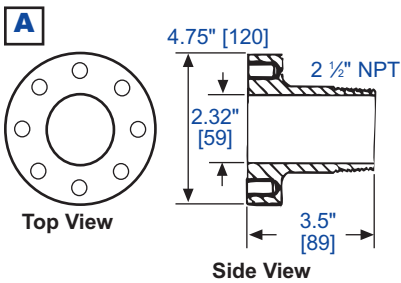
The Measure of Excellence



3.5" [89] Bolt Circle Adapters for Magnetel® Gauges

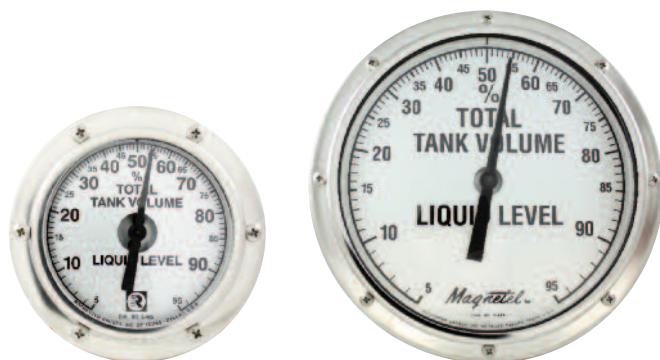
Rochester Machining Standard MS-508 - See Rochester 22 Series

Part #	Mates With	Type	Material	Thread	Dimensions
0022-00029	6300 Series	2 1/2" NPT	Forged Steel	1/2"-13UNC-2B	Reference dwg. A
0022-00030		Welding			Reference dwg. B
0022-00500					Reference dwg. C



Dial Options:

Part #	Description
5016S00445	Standard 4" Dial
5015S00489	Standard 8" Dial



Standard 4" Dial

Standard 8" Dial

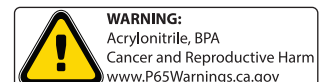
When Ordering, Specify:

1. Liquid to be gauged and specific gravity.
2. Inside diameter of tank heads, ellipsoidal, semi-ellipsoidal or hemispherical.
3. Complete model number desired from price list 6300, (example M6342-11).
4. Prefix letters for available options from price list 6300.
5. If a dial other than standard is required, furnish drawing and/or details.
6. Furnish tank drawings whenever ordering gauges for angle-mounting or for installation in vertical tanks.
7. If tank mounting flange is required, order separately from chart above.

Note: For installation instructions see 115-820.

U.S. Patents

9,304,027



02/27/2018