



## Magnetic Liquid-Level Gauges

8500  
Series

ISO 9001:2008 CERTIFIED

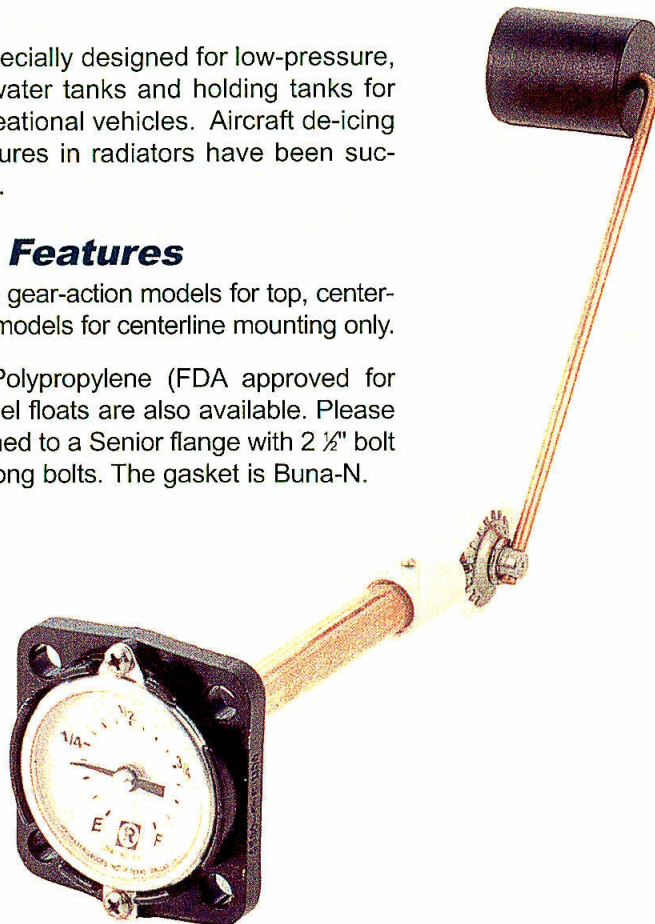
### Application

The 8500 Series Senior gauges are specially designed for low-pressure, ambient temperature use in potable water tanks and holding tanks for gray or waste water on boats and recreational vehicles. Aircraft de-icing liquids and ethylene glycol/water mixtures in radiators have been successfully measured with these gauges.

### General Information & Features

The 8500 Series gauges are available in gear-action models for top, center-line or angle mounting or in lever-action models for centerline mounting only.

The standard float is nitrile rubber. Polypropylene (FDA approved for potable water service) and stainless-steel floats are also available. Please specify your choice. The gauge is attached to a Senior flange with 2 1/2" bolt circle through use of four, 1/4" - 28 x 3/8" long bolts. The gasket is Buna-N.



Magnetic Liquid-Level Gauges

Model #	Action	Mounting	Dial, Sender or Switch Data	
8540	Gear	Top	Senior TwinSite® Sender in choice of 0-30, 0-90, or 240-30 Ohm ranges. Direct-reading fractional dials may also be used.	
8543		C/L or Angle		
8550		Top	Senior S.P.S.T., 1/2 Amp., standard. Many other switches available, see DS-364.	
8553		C/L or Angle		
8560		Top	Senior side-reading fractional dial.	
8580		C/L or Angle	#5002S00062 Senior direct-reading.	
8583				
L8543	Lever	C/L	Senior TwinSite® Sender P5816S02619.	
L8553			Senior S.P.S.T., 1/2 Amp., standard. Many other switches available, see DS-364.	
L8583			#5002S00547 Senior direct-reading.	

See reverse side for dimensional data, materials of construction, performance, and advice on how to order.

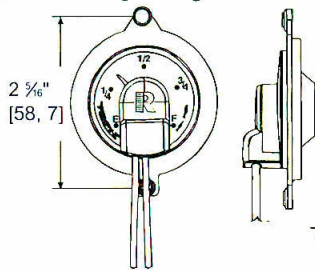
05/27/2016

The Measure of Excellence

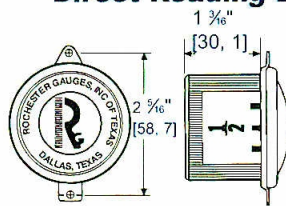
## 8500 Series

# Magnetic, Liquid-Level Gauges

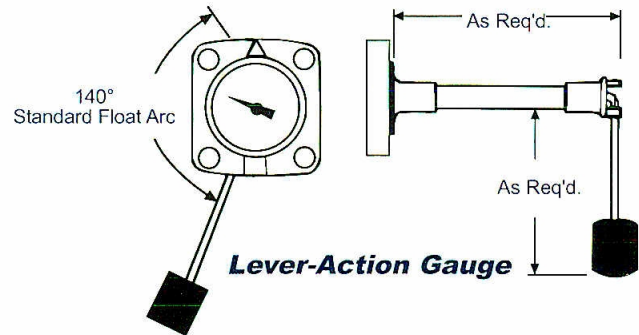
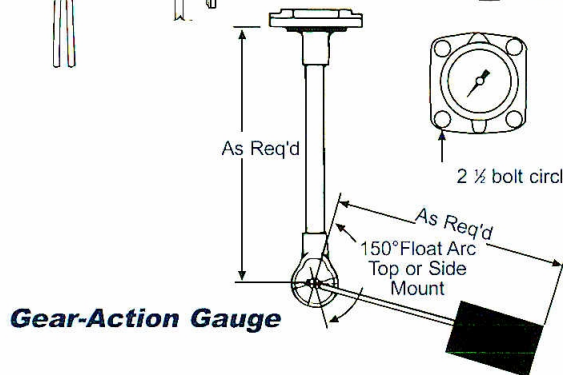
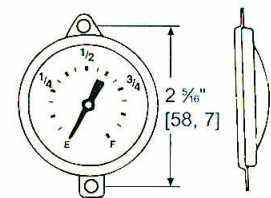
### Senior TwinSite® Sender specify ohm range



### #5025S00570 Senior Direct Reading Dial



### #5002S00062 Senior Direct Reading Dial



## General Specifications\*

### Dial Data

Dials and senders are hermetically sealed and tested in 8" Hg vacuum.

### Accuracy

Accuracy depends upon proper gauge sizing. Senior dials  $\pm 6\%$ , TwinSite® dials  $\pm 10\%$ . Accuracy may be less depending upon tank shape. Accuracy may be less near full and empty. Accuracy may be less if tank is not level. This gauge is not to be used for filling. All accuracy estimates are expressed as a percent of full scale.

### Temperature

Standard operating temperature range  $-40^{\circ}\text{F}$  to  $+158^{\circ}\text{F}$ ,  $-40^{\circ}\text{C}$  to  $70^{\circ}\text{C}$ .

### Humidity

Exposed portion is suitable for high humidity and marine applications.

### Shock

Suitable for mobile applications.

### Vibration

Suitable for mobile applications.

### Power

0.5 watts maximum for TwinSite® version.

### Tank Pressure

0 to 25 psig [0 to 1, 7 Bar].

### Approvals

UL recognized for marine water service.

Note: For installation instructions see MS-530.

## Materials of Construction\*

### Head

Injection-molded polyester plastic.

### Gear Housing or Stop Adapter

Injection-molded acetal plastic.

### Support Tube, Centershaft, & Float Rod

Brass

### Gears, Cross Stud, & Bearings

Stainless steel

### Float

Nitrile rubber

### Gasket

Buna-N, 0015-00004 or 0015-00079

### Drive Magnet

Plated Alnico

### Direct-Reading Dial

Aluminum with Acrylic crystal

### Side-Reading Dial

Aluminum with Lexan crystal

### TwinSite® Sender

Polyamide

### Mounting Bolts

Zinc-plated steel, stainless steel optional.

## When Ordering, Specify:

1. Gauge model number
2. Tank diameter and riser height
3. Mounting location
4. Any listed options

\* Materials and specifications are subject to change without notice.  
Pressure ratings subject to change due to temperature and other environmental considerations.

05/27/2016